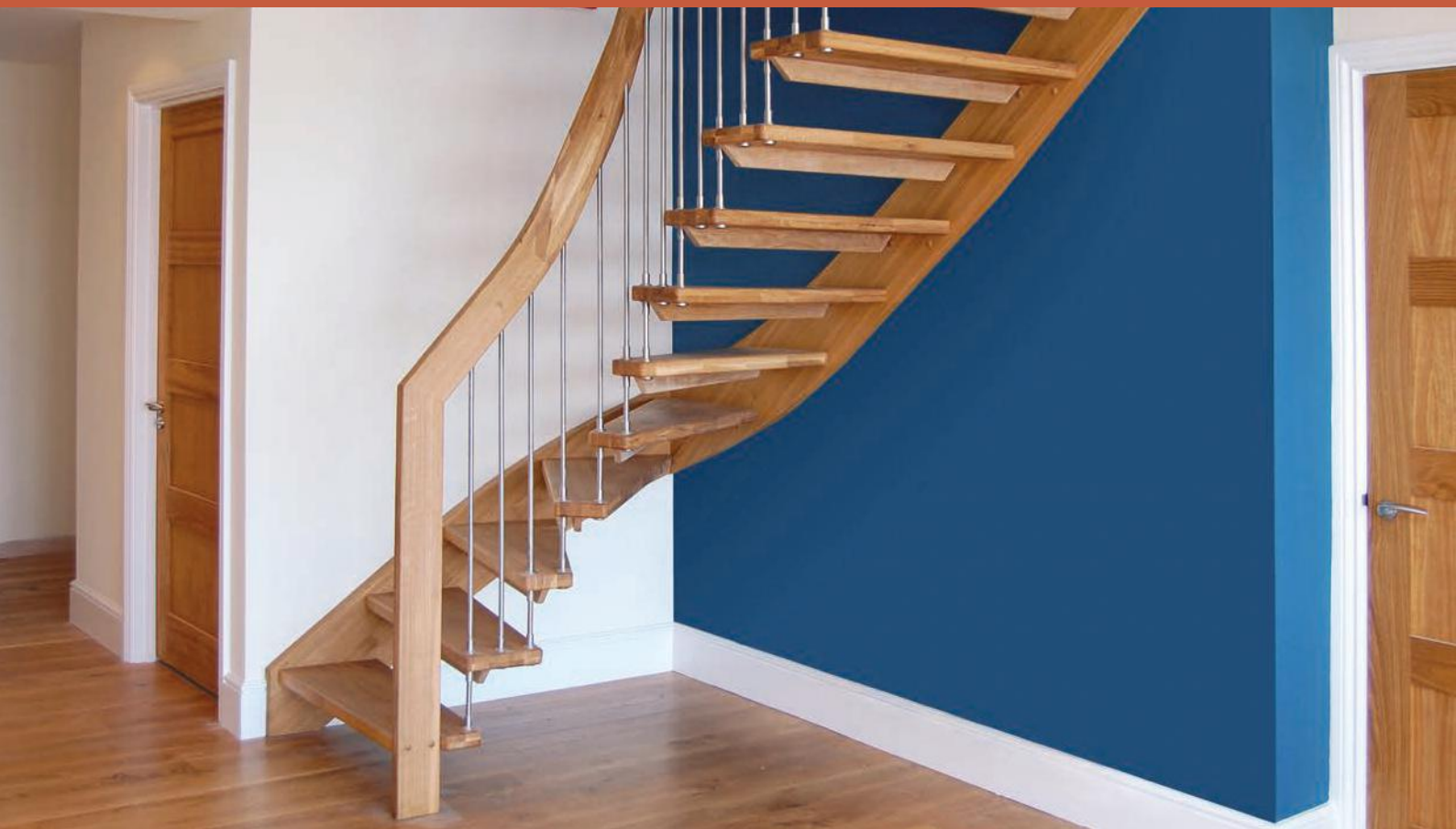
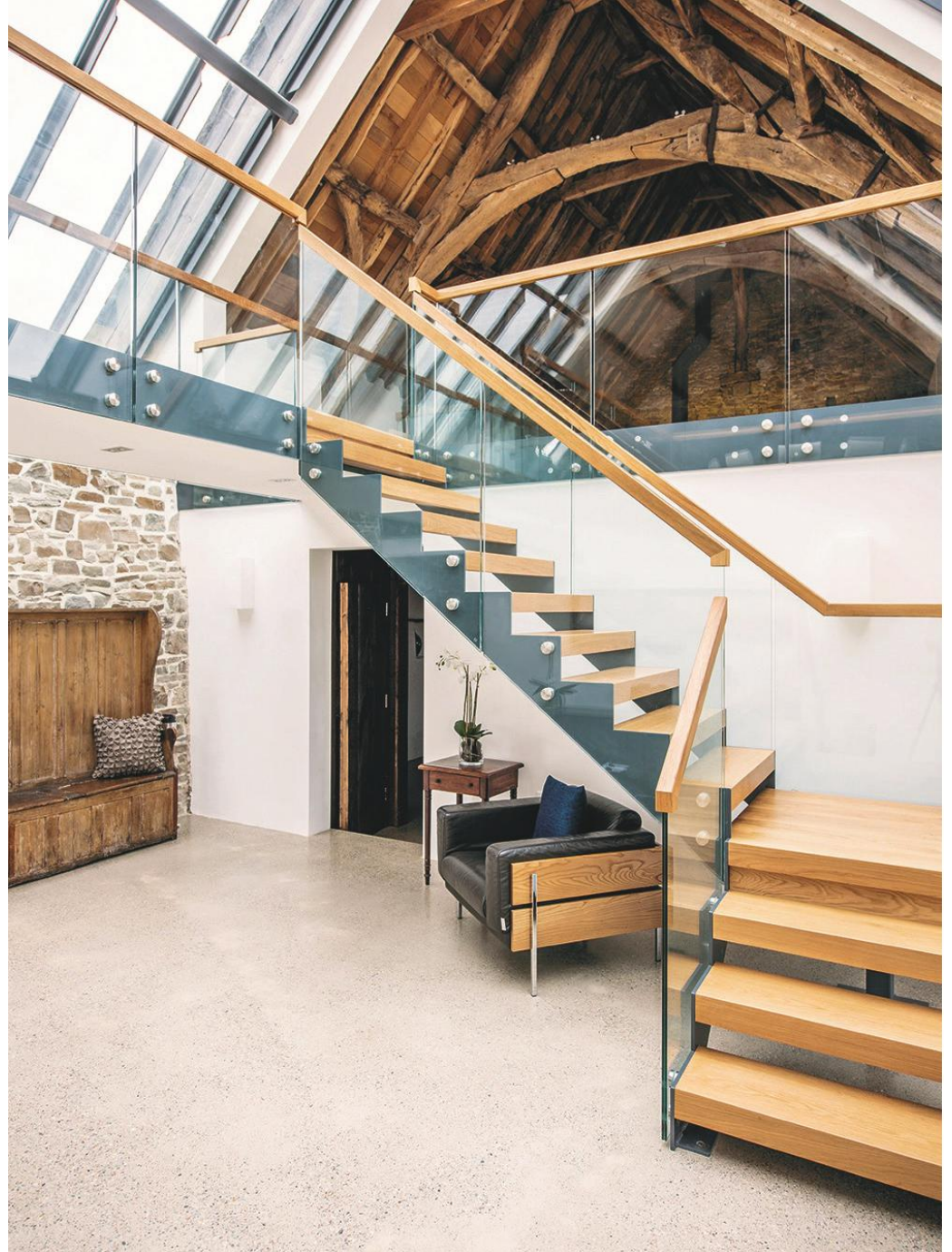




COMPLETE **STAIR** SYSTEMS

BESPOKE STAIRCASES





1

2

3



4 'Project' Broadlands Construction, Mayfair 2014.



5



6



7 'Project' Broadlands Construction, Mayfair 2014.

CREATE A STUNNING VISUAL IMPACT

Given its location within a building, a staircase has the power to create a stunning visual impression for anyone entering the property. A stunning and stylish staircase offers you the perfect opportunity to impress, whilst reflecting the style and character of the rest of the interior. Only recently have home owners and developers started to realised the impact a stair can have in a property and are now favouring a more modern approach to create the right first impression.

Our staircases are light and open in appearance and are supplied for new builds and refurbishments across the UK.



1

MODEL 500 STAIRCASE

"I WOULD HAVE
NO DIFFICULTY
RECOMMENDING
YOUR COMPANY"

Mr & Mrs Prince – Romsey



2

The Model 500 staircase combines steel stringers, timber treads and glass balustrade for a modern appearance. It is a custom made model so the stair will be individually designed for the property. The model can be supplied as a straight flight, quarter turn or half turn flight with the width and tread depth specific to each staircase.



3



4



5



1



2

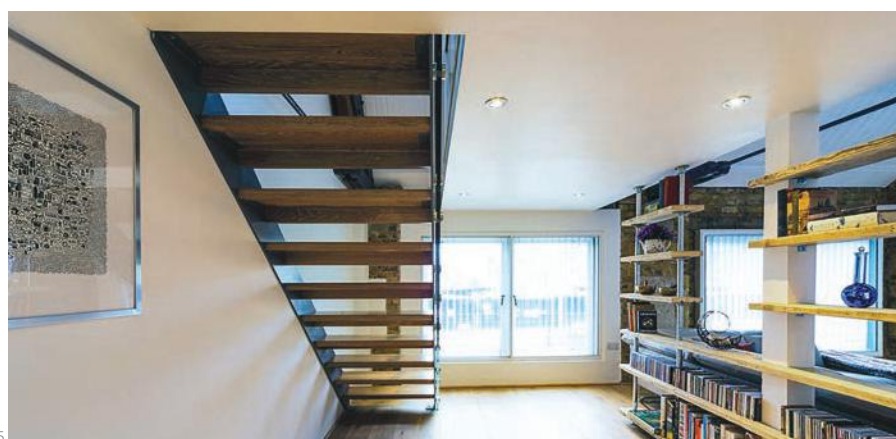
MODEL 500 STAIRCASE



3



4



5

The steel stringers on the model 500 staircase are cut in various shapes as can be seen in the photos. They are powder coated to any RAL colour or can be supplied in either brushed or polished stainless steel. For strength, the treads on this model are always hardwood with beech, oak, maple and walnut being the most popular species. These treads are supplied matt varnished, stained or oiled or are left raw for on-site treatment.



1 'Project' Broadlands Construction, Mayfair 2014.



2 'Project' Broadlands Construction, Mayfair 2014.



3 'Project' Broadlands Construction, Mayfair 2014.

Although this staircase is available with vertical spindles or horizontal rails, glass is the overwhelming favourite balustrade infill option – allowing the most passage of light. We have ‘framed glass’ with 10mm glass panels held in place with newel posts fixed to the side of the stringers or the ‘frameless glass’ option where 17.5mm laminated glass panels are used, bolted directly to the side of the stringers. This latter option removes the need of newel posts. The handrails are generally timber (to match the treads) or supplied in stainless or powder coated steel.



4

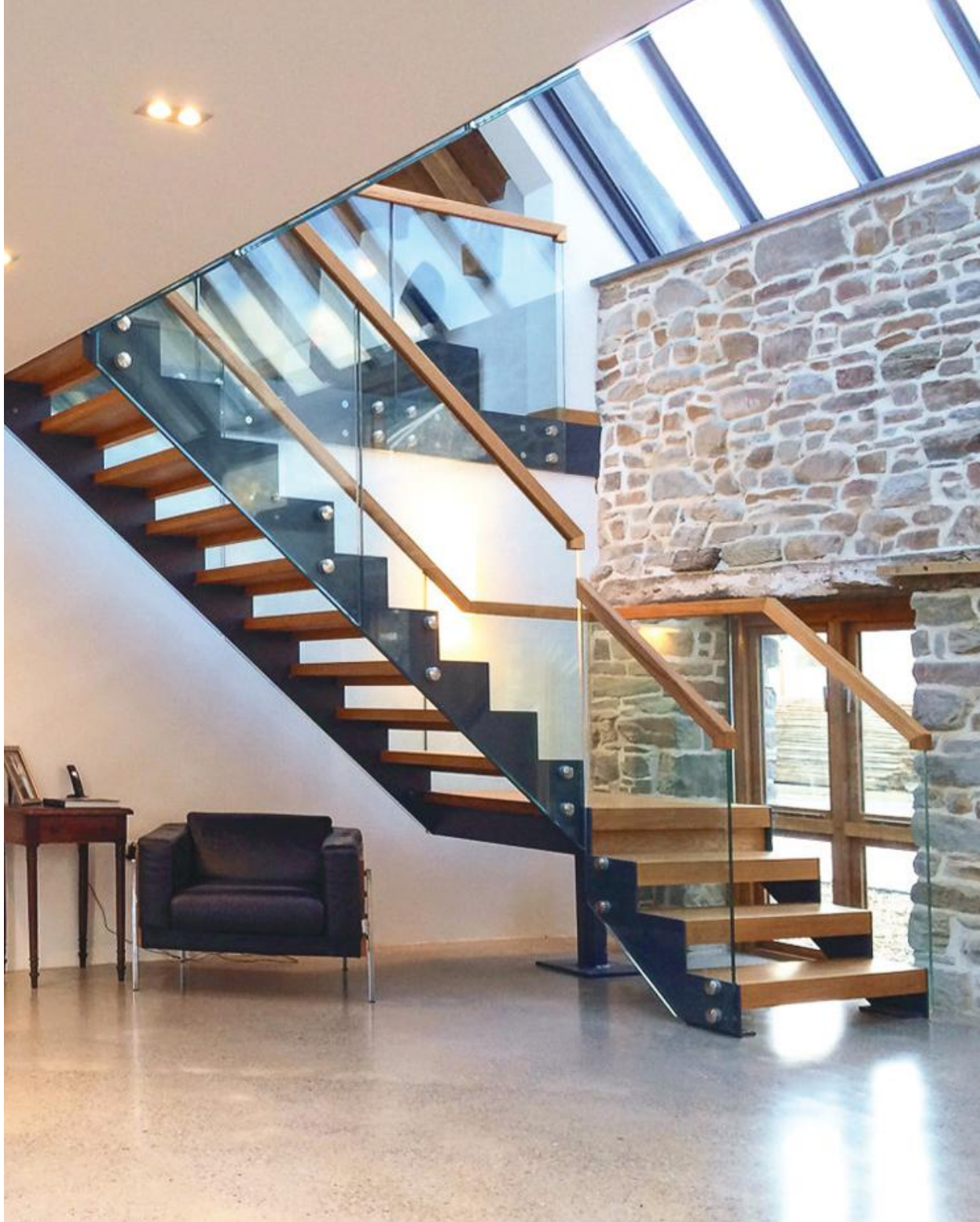
"THANK YOU
SO MUCH FOR
ALL YOUR HELP
THROUGHOUT
THE PROCESS,
I WOULD
DEFINITELY
RECOMMEND
YOU TO ANYONE
LOOKING FOR
A STUNNING
STAIRCASE!!"

Mr & Mrs Rees – Surrey



5

MODEL 500 STAIRCASE



1



2



4



As with all bespoke staircases there are a number of additional elements that can be added to enhance the staircase. To comply with UK building regulations, the gap between the treads needs to be less than 100mm. We can achieve this by having fully closed timber risers, a closed riser with a glass panel, a stainless steel riser bar, a special L shaped mini riser or a half acrylic / glass panel. Matching landing balustrade is often required across the stairwell to provide protection and continue the theme of the staircase upstairs.

MODEL 500 STAIRCASE

WF STAIRCASE

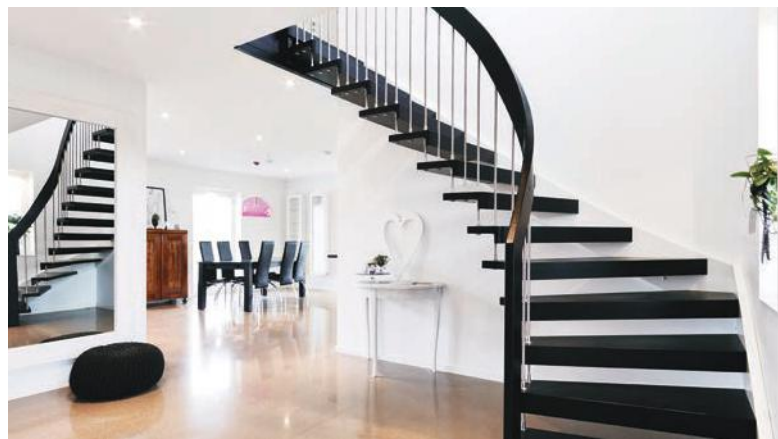




2



3



4

The WF Staircase is a cantilevered style, floating timber staircase. Uniquely, it only has one stringer running on the wall side of the stair leaving the open side suspended in mid air creating a stunning open effect. This is achieved by a handrail with a special steel core into which the steel spindles screw. The spindles then bolt the tread in place with the load transferred through the spindles and handrail to the newel posts top and bottom. It is the most open and light staircase we supply and it is very economically priced.

"I THINK THE FINAL PRODUCT IS EXCELLENT- SOMETHING TO BE PROUD OF"

Mr & Mrs Gray, Petersfield



WF STAIRCASE

Given how the stair is constructed, the timber used to create this staircase is always hardwood with beech, oak, maple, ash and walnut being the most popular options. The timber is generally oiled or matt varnished in the factory or can be painted, stained or left 'raw' for on-site treatment. The spindles are supplied in brushed or polished stainless steel or they can be powder coated if preferred.



2



3

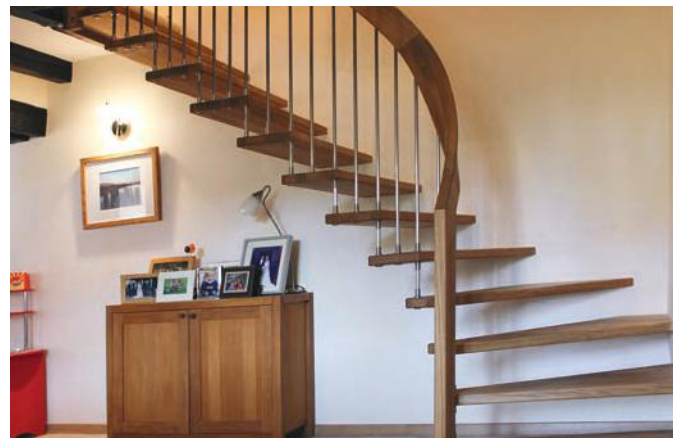


4

WF STAIRCASE



2



3

Given this is a bespoke product and each staircase supplied is unique, there are a couple of optional extras available which enhance the stair. Many clients opt for a white wall painted wall stringer which blends into the wall - further enhancing the floating feel. A very popular addition available on ¼ and ½ turn flights is the inclusion of a curved handrail at the turn. This creates a wonderful twisting swoop to the handrail.

WF STAIRCASE

“ALL IN AND
LOOKS FANTASTIC
– THANKS FOR ALL
YOUR ATTENTION
TO DETAIL”

Mr Reid - Manchester

WF STAIRCASE



4



5



6

WHAT TO DO NEXT

A staircase is often the first item on view when entering a home, creating the perfect opportunity to create a stunning visual impact.

Once you have studied the brochure and the pictures on our website you will need to contact the office for a quotation. Please forward any drawings, sketches or photos together with the model you like and we will prepare an offer. You can email CAD or PDF files to info@completestairsystems.co.uk or post them to the address below.

Upon acceptance of the quotation we will finalise the design by preparing drawings. These are then issued for final approval prior to manufacture. Delivery times for the modular staircases range from 2-5 weeks and for the bespoke models 6-8 weeks, depending on the size and complexity of the staircase.

Please note that manufacture does not commence until drawings have been approved.



LET US KNOW YOUR REQUIREMENTS
CALL **01794 522444**
EMAIL [**INFO@COMPLETESTAIRSYSTEMS.CO.UK**](mailto:info@completestairsystems.co.uk)

BUILDING REGULATIONS

If you require a staircase for a new build or installing a stair into a new loft conversion, it will need to comply with the current building regulations.

The main governing documents are Building Regulations Part K (domestic and commercial), Part M (Ambulant stairs in commercial settings) and British Standard 5395 for both domestic and commercial spiral and helical staircases. Extracts from all these documents are available on our website.

DOMESTIC

Many of our staircases are manufactured abroad where regulations are less stringent. Some models have horizontal balustrade or have open risers which are not permitted within the UK. Some of the pictures in this brochure and on our website do show staircases that contravene the regulations but these can easily be adapted to conform. If you have any questions regarding building regulations, please contact the office directly. You can also use the table (on the right) as a guide.

DOMESTIC REGULATION GUIDE

Spiral Stair		Straight/Quarter/Half turn	
Main Stair		Main Stair	
Max Rise	220mm	Max Rise	220mm
Min Rise	170mm	Min Going	220mm
Min Centre Going	190mm	N.B. Pitch line should not exceed 42°	
Clear Tread Width	800mm	Clear Tread Width	800mm*
Secondary Stair		Secondary Stair	
Max Rise	220mm	Max Rise	220mm
Min Rise	170mm	Min Going	220mm
Min Centre Going	145mm	N.B. Pitch line should not exceed 42°	
Clear Tread Width	600mm	Clear Tread Width	600mm

* Building Regulation do not specify a clear tread width for straight stairs. Measurements are for guidance only.

TERMINOLOGY

Tread - The step you walk on.

Stringer - The side of the stair that supports the treads, usually in timber or steel.

Spindle - The vertical member filling in the space between the stringer and the handrail.

Newel Post - The vertical support post supporting the balustrade. Usually located at the top and bottom of the staircase.

Balustrade - Collective term given to the handrail, spindles and newel posts.

Landing/Horizontal Balustrade - Balustrade continuing around a stairwell opening.

Going - Looking from plan view, the depth of the tread.

Pitch Line - Measurement showing how steep a stair is. Taken horizontally from the front of each tread.

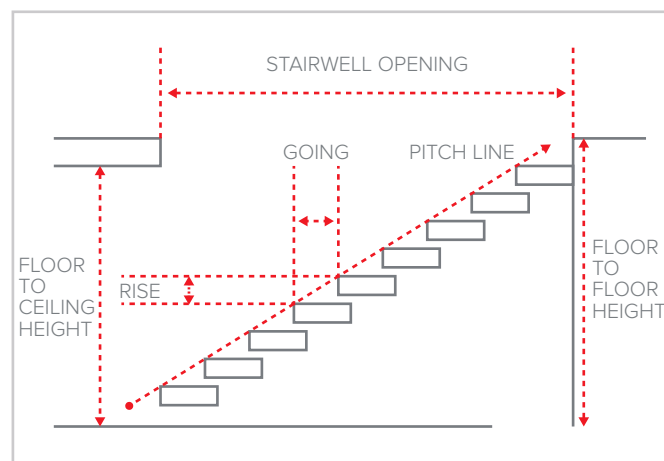
Rise - Vertical height from top of tread to top of tread.

Clear Width - The clear walking width between handrail-to-handrail or handrail-to-centre column (spirals).

Diameter - The overall width of a spiral staircase measured from outside of handrail to outside of handrail.

Landing Platform - The triangular or square top platform of a spiral staircase which connects the landing to the centre column.

Stairwell - The opening in the floor in which the staircase will be situated.



COMPLETE
STAIR
SYSTEMS

T : 01794 522444

E : INFO@COMPLETESTAIRSYSTEMS.CO.UK

WWW.COMPLETESTAIRSYSTEMS.CO.UK

WWW.TIMBERSTAIRSYSTEMS.CO.UK

WWW.KITSTAIRSYSTEMS.CO.UK

WWW.SPIRALSTAIRSYSTEMS.CO.UK

COMPLETE STAIR SYSTEMS LTD, UNIT 15 BELBINS BUSINESS PARK,
CUPERNHAM LANE, ROMSEY, HAMPSHIRE, SO51 7JF

Request your copy of our
Bespoke Spiral Staircase Brochure

